

The background is a vibrant, abstract composition of thick paint strokes and splatters in shades of blue, green, red, and yellow. A large, light gray circle is centered on the page, containing the main title and subtitle.

A CREATIVE WORKBOOK

# REMARKABLE ME

WEEK 5  
*DISCRIMINATION &  
CELEBRATING DIFFERENCE*

7 WEEK TRANSITIONAL SUPPORT PROGRAMME



# WEEK 5 RESOURCES



1

ARTS & CRAFTS INCLUDING PENS & PAPER

2

WORRY BOX

3

SCISSORS

4

LIFE IS A LOTTERY GAME CARDS

5

CRAFT EMBELLISHMENTS

6

SWEETS OR RAISINS

7

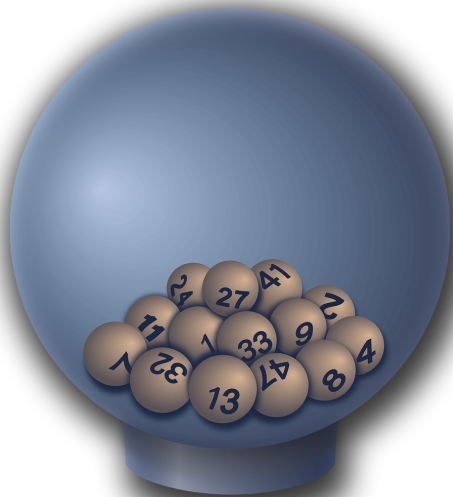
A3 or A4 PAPER

8



# LIFE IS A LOTTERY

MAKE SURE YOU HAVE YOUR LIFE IS A LOTTERY SHEET PRINTED AND THE CARDS CUT UP



CUT UP ALL OF YOUR LIFE IS A LOTTERY CARDS, SHUFFLE THEM AND PLACE THEM FACE DOWN SO YOU CAN'T SEE WHAT IS WRITTEN ON THEM



The facilitator will ask each child to randomly choose a card and read it out to the rest of the group. Please follow the instructions on the card.

LOTTERY IS A LOTTERY



If you have a brother  
DON'T TAKE A SWEET

LOTTERY IS A LOTTERY



If you have blue eyes  
DON'T TAKE A SWEET

LOTTERY IS A LOTTERY



You are stressed about  
your GCSE'S  
DON'T TAKE A SWEET

LOTTERY IS A LOTTERY



Your best friend moves  
abroad  
DON'T TAKE A SWEET

LOTTERY IS A LOTTERY



Your first name begins  
with a vowel  
DON'T TAKE A SWEET

LOTTERY IS A LOTTERY



Your friend doesn't  
invite you to their party  
DON'T TAKE A SWEET

LOTTERY IS A LOTTERY



If you've got blonde hair  
DON'T TAKE A SWEET

LOTTERY IS A LOTTERY



Your parents split up  
DON'T TAKE A SWEET

LOTTERY IS A LOTTERY



You win a competition  
TAKE A SWEET

LOTTERY IS A LOTTERY



You start a new school &  
make loads of new friends  
TAKE A SWEET

LOTTERY IS A LOTTERY



You get A's in your exams  
TAKE A SWEET

LOTTERY IS A LOTTERY



You get given your dream  
job  
TAKE A SWEET

LOTTERY IS A LOTTERY



You've been invited to  
two parties  
TAKE A SWEET

LOTTERY IS A LOTTERY



You learn an new  
awesome dance  
TAKE A SWEET

LOTTERY IS A LOTTERY



You get a new bike  
TAKE A SWEET

LOTTERY IS A LOTTERY



You complete a game in  
record time  
TAKE A SWEET



# REPORTERS ON DISCRIMINATION

THIS WILL BE A ROLE PLAY /DRAMA ACTIVITY



IN YOUR GROUP YOU  
WILL BE GIVEN AN  
ARTICLE ABOUT A TYPE  
OF DISCRIMINATION



You will be put into a group and as a team will make a TV news report about it and present your role play to the rest of the group.



# ARTICLE 1

THIS WILL BE A ROLE PLAY /DRAMA ACTIVITY



©remarkableme.co.uk

**A group of black professional footballers have accused Pizza Hut of racism. The five footballers were shocked when the manager asked them to pay up front for their meals because of the way they looked. Nearby there was a table of white young people eating but they were allowed to pay after they had finished their meal. When the footballers refused to pay upfront, staff called the police claiming that they were being disruptive.**

**Pizza Hut apologised to the footballers and admitted that they had been treated very badly but insisted there was no racism. However, the footballers rejected this statement and said that the only thing that was different to the other customers was the colour of their skin.**

**Alison Vaughan, of football campaign group Kick It Out, said that they were surprised that such a high-profile company did not ensure all their staff are fully trained on equality issues.**

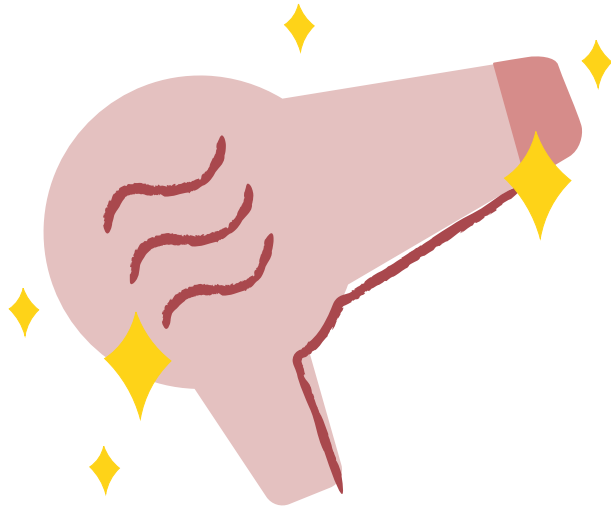
**Dorset Race Equality Council boss Adnan Chaudry said: "If Pizza Hut is saying that it wasn't racially motivated then I find that incredible."**

**A football club spokesman said: "In this day and age, it is upsetting to hear that people are treated differently because of the colour of their skin."**



# ARTICLE 2

THIS WILL BE A ROLE PLAY /DRAMA ACTIVITY



**Bushra Noah is a Muslim girl who was rejected from 25 hairdressing jobs. One particular hairdresser stated that it was because she wears a head scarf.**

**Bushra had applied for a job as junior assistant at the salon in Kings Cross. When she arrived, she claimed that the owner was shocked that she wore a head scarf. Bushra felt this was unfair discrimination and took her case to court.**

**The owner of the salon told the courts that she was shocked Bushra had not told her she wears a head scarf. She claimed that staff needed to display their hairstyles to customers and that staff needed to reflect the funky, urban image of her salon.**





# WRITING FRAME

PLEASE CHOOSE A ROLE FROM THE LIST BELOW

## ROLE 1 – REPORTER/NEWS READER

COME UP WITH A CATCHY INTROUCTION TO START OFF THE REPORT, TO GRAB THE AUDIENCES ATTENTION OR CREATE A SUUMMARY OF EVENTS

## ROLE 2 – WITNESS

EXPLAIN WHAT DISCRIMINATION IS HAPPENING ?  
WHAT HARMFUL BEHAVIOUR HAS HAPPENED?  
WHY DID THEY TARGET THESE PEOPLE?  
WHAT TYPE OF DISCRIMINATION IS THIS?

## ROLE 3 – POLICE OFFICER/LAWYER

WHAT HAS THE CONSEQUENCE BEEN OF THIS DISCRIMINATION ?  
HOW HAS THE HARMFUL BEHAVIOUR AFFECTED THE PERSON?



# WRITING FRAME

PLEASE CHOOSE A ROLE FROM THE LIST BELOW

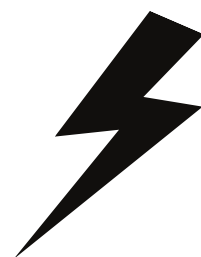
AS A TEAM COME UP WITH...

WHAT ACTION HAS BEEN TAKEN?

WHAT RECOMMENDATIONS DO YOU THINK SHOULD BE TAKEN?

HAS ANY SUPPORT BEEN GIVEN TO THE PERSON?

HAVE ANY WIDER MEASURES BEEN PUT IN PLACE TO PREVENT THIS FROM HAPPENING AGAIN?





# CONNECT TEAMS

YOU WILL BE MOVED INTO YOUR CONNECT TEAMS



## YOUR HOME CONNECT TASK IS TO MAKE A POSTER ABOUT ANOTHER CULTURE

Research a culture of your choice, find interesting facts about it and create a poster presenting those.



# CELEBRATING DIFFERENCE

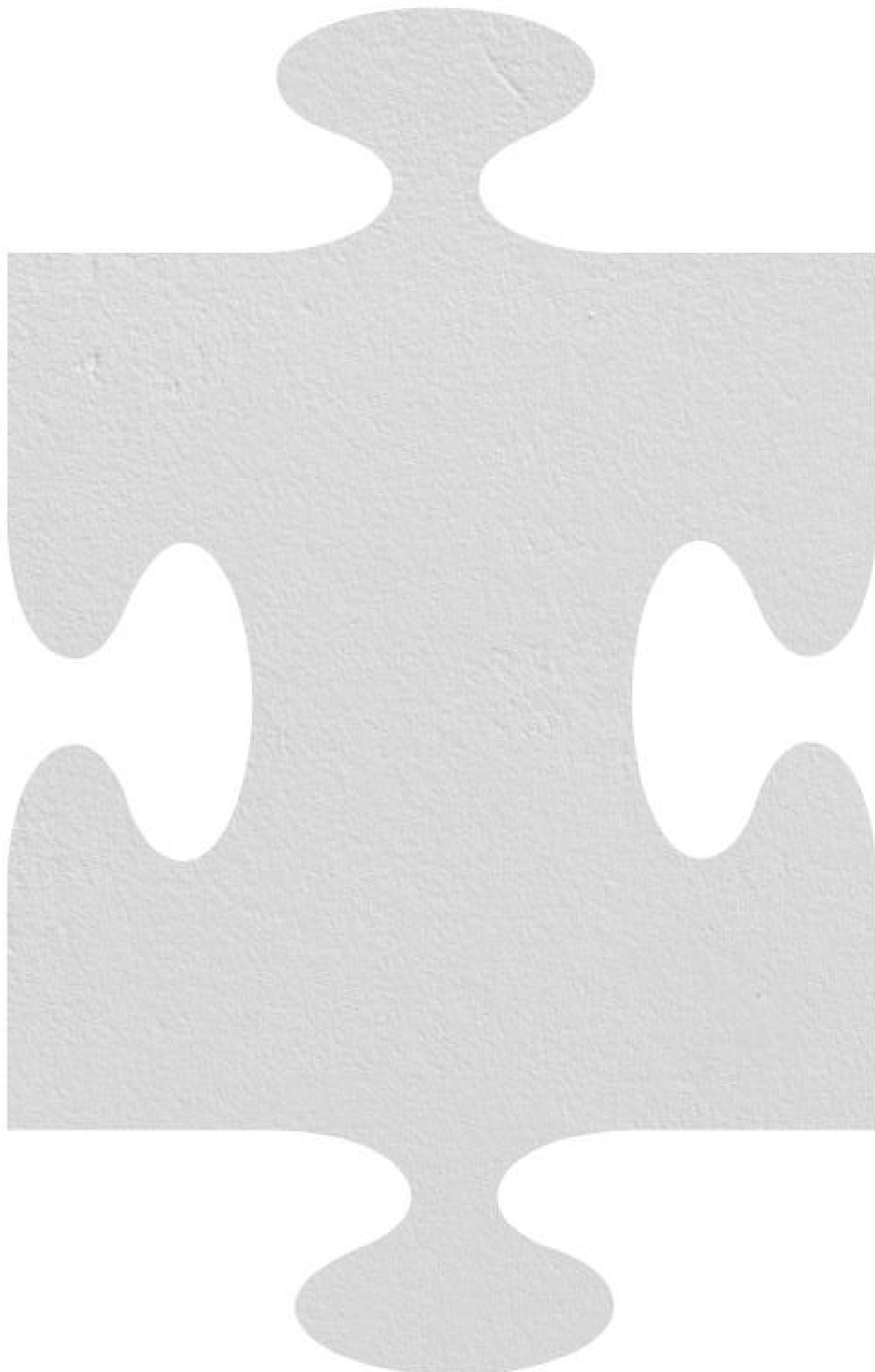
YOU WILL NEED TO DRAW ON YOUR PUZZLE  
PIECE WHICH IS ON THE NEXT PAGE



## DRAW ANOTHER CHILD ON ZOOM

The facilitator will ask you to draw  
another child in the group.  
Make sure you draw them on the  
puzzle piece that is on the next  
page.







# REMARKABLE ME CIRCLE

TIME TO SHARE WHAT YOU FEEL WORRIED ABOUT AND WHAT YOU ARE GRATEFUL FOR WITH THE GROUP

# THANK YOU

THINK ABOUT SOMEONE  
IN THE GROUP WHO YOU  
WANT TO APPRECIATE

Put your hand up & wait to be chosen. Say someones name in the group and say why you want to thank them.